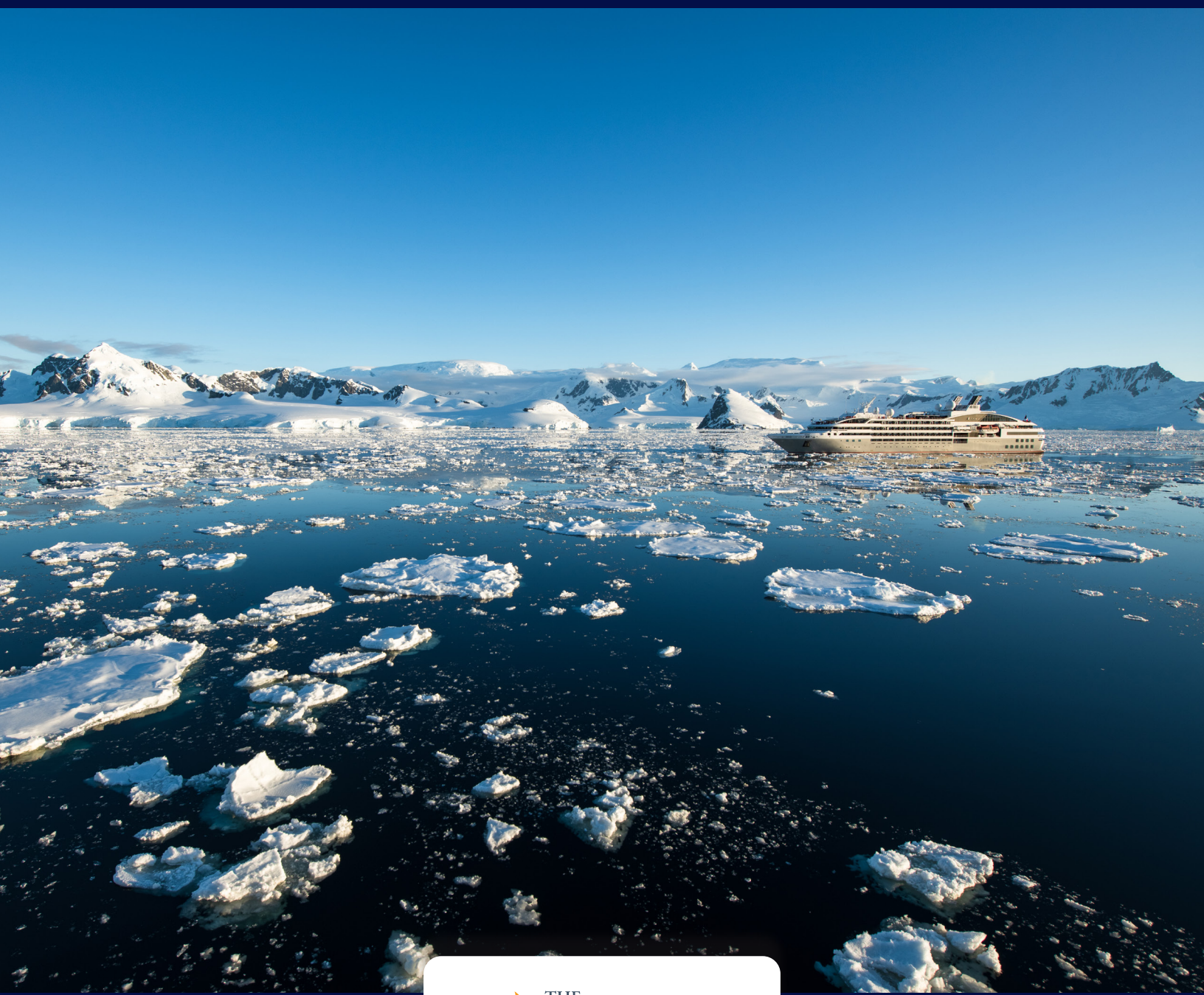


2027 Immersive Antarctica

A Experiential Science Voyage

with Dr. Rachel Phillips

December 6-17, 2027



Never stop learning.



Call today 1-855-476-5080



December 6-17, 2027

From \$15,050

double occupancy, per person



2027 Immersive Antarctica **An Experiential Science Voyage**

with Dr. Rachel Phillips

Antarctica is often described as remote, pristine, and untouched, but to ocean scientists, it is something far more consequential. The waters surrounding the continent drive planetary systems, regulating climate, circulating heat, storing carbon, and sustaining ecosystems far beyond the polar regions. On this extraordinary voyage, developed in partnership with the Woods Hole Oceanographic Institution (WHOI), you'll journey into this dynamic environment to encounter Antarctica not simply as a destination, but as a vital engine of Earth's ocean system.

Traveling with leading scientists and experts, you'll move beyond surface impressions to explore how the Southern Ocean truly functions. Through daily briefings, deck-side observation, and conversations with researchers, the icy landscapes around you become a living laboratory. Rather than presenting tidy conclusions, this journey invites you into the process of discovery—revealing what scientists are still learning about this remarkable region and why Antarctica remains central to understanding our changing planet.

Your Journey Expert



Dr. Rachel Phillips is a National Science Foundation STEM Education Postdoctoral Research Fellow at the University of South Carolina. She has extensive expertise in oceanography, and previously served as Guest Researcher at Woods Hole Oceanographic Institution studying paleoceanography. Professor Phillips received her PhD in geological sciences from the University of Texas at El Paso, where her research aimed to improve reconstructions of Earth's ancient atmospheric and oceanic conditions by strengthening the reliability and precision of palaeoceanographic proxies. A popular science communicator, Professor Phillips also works to promote global geoscience communication through her YouTube channel, GEO GIRL, on which she shares educational geoscience videos. Through her interdisciplinary research and communication endeavors, Rachel has developed expertise in biogeochemistry, geomicrobiology,

paleoceanography, paleoclimatology, and geoscience education. She created the Audible Original *Earth's Great Extinctions* with The Great Courses, and is developing a new Great Course, *Tectonic Time Machines: Reading Earth's Deep Past*.

Highlights

- Cross the legendary Drake Passage, learning how oceanographers read winds, currents, and seabird movements while traversing the Antarctic Convergence where great ocean systems meet.
- Explore the Antarctic Peninsula by Zodiac and on foot, encountering towering glaciers, sculpted icebergs, and remarkable wildlife, including penguins, seals, and whales.
- Discover the hidden life within Antarctic ice, where microscopic algae support vast marine ecosystems that sustain the Southern Ocean's extraordinary biodiversity.
- Gain rare insights from WHOI scientists, connecting what you see on the surface—ice, wildlife, and ocean—to the powerful environmental processes shaping our planet.
- Explore “the end of the world” in Ushuaia, the southernmost city on Earth, dramatically set between the Andes Mountains and the Beagle Channel.
- Witness Antarctica's dramatic landscapes, from towering tidewater glaciers and volcanic shores to luminous icebergs drifting through pristine polar waters.
- Deck-based observation connects visible phenomena to deeper systems.



Immersive Antarctica

An Experiential Science Voyage

with Rachel Phillips

Itinerary



Day 1: The Journey South Begins: Arrival in Buenos Aires

Welcome to Buenos Aires! Upon arrival at Ezeiza Airport (EZE), you will be met and transferred to the Casa Lucia Member of Meliá Collection (or similar) for overnight. For those arriving in the morning, an early check-in will be available. Gather this evening with your fellow travelers for a welcome reception at the hotel. Dinner will be on your own.

Included Meal: Reception

Accommodation: Casa Lucia Member of Meliá Collection (or similar)

Day 2: To the End of the World: Ushuaia and the Gateway to Antarctica

After breakfast, transfer by group charter flight to Ushuaia, “El fin del Mundo,” at the southern tip of the Andes, and embark *Le Lyrial*. Nestled between mountains and the Beagle Channel, Ushuaia is Antarctica’s gateway. Onboard, WHOI scientists introduce the Southern Ocean as a powerful system shaping global climate, circulation, and life far beyond the poles.

Included Meals: Breakfast, Lunch, Dinner

Accommodations: *Le Lyrial*

Days 3-4: The Drake Passage and Antarctic Convergence: Where Oceans Meet

Crossing the Drake Passage is both a physical and intellectual threshold. As your ship traverses the Antarctic Convergence—where cold polar waters meet warmer northern seas—you will receive WHOI briefings that explore the invisible boundaries that define the Southern Ocean. Seabirds trace wind and current patterns overhead, offering real-time cues to ocean circulation. Daily discussions, deck-based observation, and informal conversations begin to shift your perspective from surface impressions to the deeper systems shaping weather, ice, and life. This is a time of orientation: learning the rules of safe Antarctic travel, while also learning how scientists read the ocean itself.

Including Meals: Breakfast, Lunch, Dinner

Accommodations: *Le Lyrial*





Days 5-9: The Living Ice: Exploring the Antarctic Peninsula

The Antarctic Peninsula reveals a world of striking contrasts, with towering glaciers, sculpted icebergs, volcanic beaches, and wildlife thriving in extreme conditions. Each day unfolds according to ice, weather, and opportunity, guided by the Captain and Expedition Leader in compliance with IAATO regulations. Here, WHOI's ICE-LIFE research reframes your experience. Ice is no longer a static backdrop, but a living system that is home to microscopic algae that sustain krill, penguins, seals, and whales. What appears pristine and silent is, in fact, biologically active and deeply interconnected. Zodiac cruises and landings allow close observation of glaciers, sea ice, and wildlife, while WHOI scientists help you and your fellow guests connect what you see above the surface to processes unfolding beneath it. Research stations, historic sites, and natural harbors provide further context for human presence and scientific inquiry in this remote region.

Included Meals: Breakfast, Lunch, Dinner

Accommodations: *Le Lyrial*



Days 10-11: The Ocean that Connects the World

Your return across the Drake Passage offers time for synthesis. As Antarctica recedes astern, discussions focus on connection, such as how the Southern Ocean influences global systems, and how new understanding reshapes perspective long after the voyage ends. This is not a call to action, but a moment of clarity: seeing the ocean not as scenery, but as infrastructure for life on Earth.

Included Meals: Breakfast, Lunch, Dinner

Accommodations: *Le Lyrial*



Day 12: Returning from the Edge of the Earth

After breakfast, you will disembark and transfer for the group charter flight back to Buenos Aires, where you can connect with flights homeward. Ushuaia concludes the voyage, but not the experience. You return home carrying a fundamentally different understanding of Antarctica, the ocean, and the systems that sustain Earth. What began as a journey to the end of the world becomes a reframing of the world itself.

Included Meals: Breakfast



Immersive Antarctica

An Experiential Science Voyage

with Rachel Phillips



What's Included:

- Comprehensive 10-night cruise aboard the deluxe *Le Lyial*
- One pre-night at the Casa Lucia Member of Meliá Collection (or similar) in Buenos Aires, Argentina, with welcome reception (dinner on own) on December 6, 2027
- One PONANT EXPLORATIONS Tour Director dedicated to The Great Courses Journeys from the Pre-Night on December 6, 2027, through the end of the voyage/disembarkation on December 17, 2027
- Half day of touring in Buenos Aires, and lunch, with transfer to pier for embarkation on December 7, 2027
- One exclusive The Great Courses Journeys onboard hosted cocktail reception
- 2-3 onboard lectures given by The Great Courses Journeys Expert
- Exclusive shore excursions in each port, thoughtfully designed in close collaboration with TGCJ Experts specifically for The Great Courses Journeys guests, led by local guides.
- Captain's gala dinners and cocktail receptions aboard ship
- All meals aboard ship including early riser's coffee and pastry, breakfast, lunch, afternoon tea, dinner
- Meals ashore as listed in the itinerary
- Open bar aboard ship excluding premium alcohol, including select wines with lunch and dinner
- 24-hour complimentary room service
- Comprehensive pre-departure materials
- Unlimited WiFi (as available via satellite)
- Airport/hotel/pier transfers and handling of luggage on official arrival and departure days, December 6, 2027 and December 17, 2027, respectively
- Port taxes and charges
- Gratuities to shipboard personnel, porters, guides, and drivers on tours

Accommodations



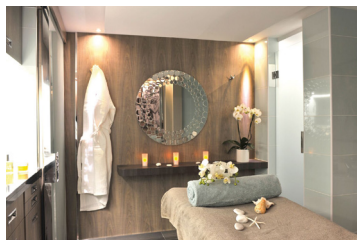
Luxury Ship *Le Lyrial*

The five-star *Le Lyrial* is the very embodiment of PONANT EXPLORATIONS' generation of intimately sized ships. Her exterior and interior lines, all understatement and refinement, make her a rare and innovative yacht. The wellness area offers a spa with massage and beauty treatments, as well as a fitness area and steam room. Plus, with just 122 staterooms and suites, each with a sea view, guests will enjoy the subtle combination of luxury, intimacy, and well-being. **(10 nights)**

Casa Lucia Member of Meliá Collection

Buenos Aires, Argentina

Located in Buenos Aires' elegant Recoleta neighborhood, Casa Lucia Member of Meliá Collection is a refined five-star boutique hotel set within a beautifully restored historic tower dating to 1929. Blending Art Deco heritage with contemporary Argentine design, the property offers stylish rooms and suites, a restaurant and cocktail bar, and a wellness area with spa, gym, and indoor pool. Its central yet tranquil location places guests within walking distance of cafés, galleries, and cultural landmarks. **(1 night)**



SPA



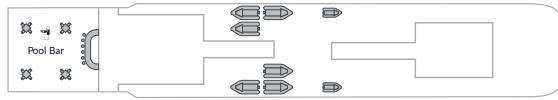
RESTAURANT



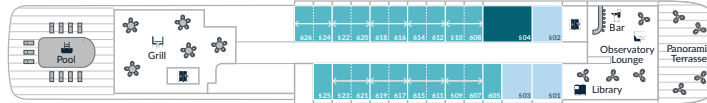
OWNER'S SUITE

Le Lyril Deck Plan & Pricing

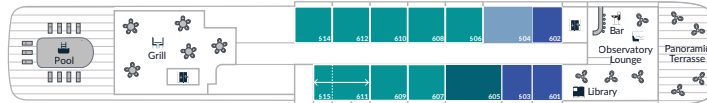
DECK 7



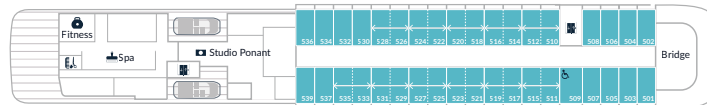
DECK 6



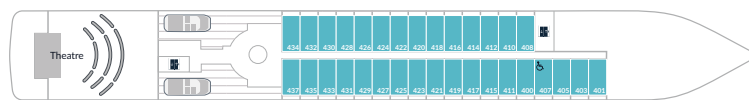
DECK 6 - Le Lyril



DECK 5



DECK 4



DECK 3



DECK 2



- Superior Stateroom Deck 3
- Deluxe Suite Decks 3
- Prestige Stateroom Decks 4-5-6
- Deluxe Suite Deck 6
- ↔ Prestige Suite Decks 5-6
- Owner's Suite Deck 6

CATEGORY	DOUBLE OCCUPANCY <i>per person</i>	SINGLE OCCUPANCY <i>per person</i>
Super Stateroom - Deck 3	\$15,050	\$26,320
Deluxe Stateroom - Deck 3	\$15,670	\$27,560
Prestige Stateroom - Deck 4	\$16,240	\$28,700
Prestige Stateroom - Deck 5	\$16,460	\$29,140
Prestige Stateroom - Deck 6	\$16,800	\$29,820
Deluxe Suite - Deck 6	\$22,400	\$41,020
Prestige Suite - Deck 5	\$23,170	\$42,560
Privilege Suite - Deck 6	\$24,850	\$45,920
Grand Deluxe Suite - Deck 6	\$44,040	\$84,300
Grand Privilege Suite - Deck 6	\$45,280	\$86,780
Owner's Suite - Deck 6	\$46,530	\$89,280

Departure: Immersive Antarctica: An Experiential Science Voyage
December 6-17, 2027 | Deposit: 25% of Tour Fare

You will be allocated a cabin within The Great Courses Journey's allotment, specific cabin requests based on availability.

[For Full Terms & Conditions Click Here](#)